

2008

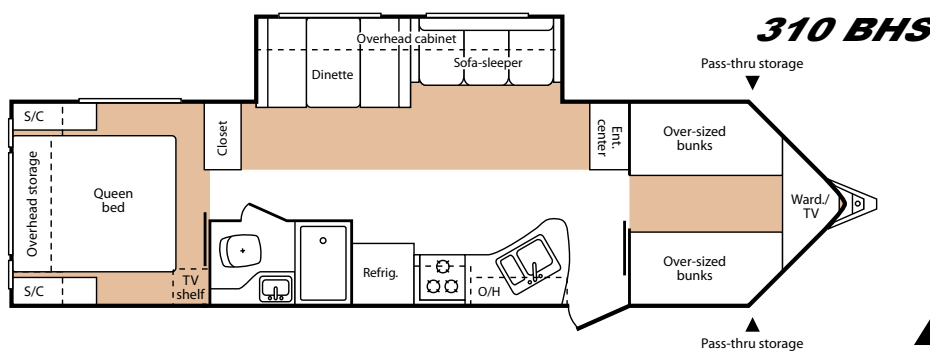
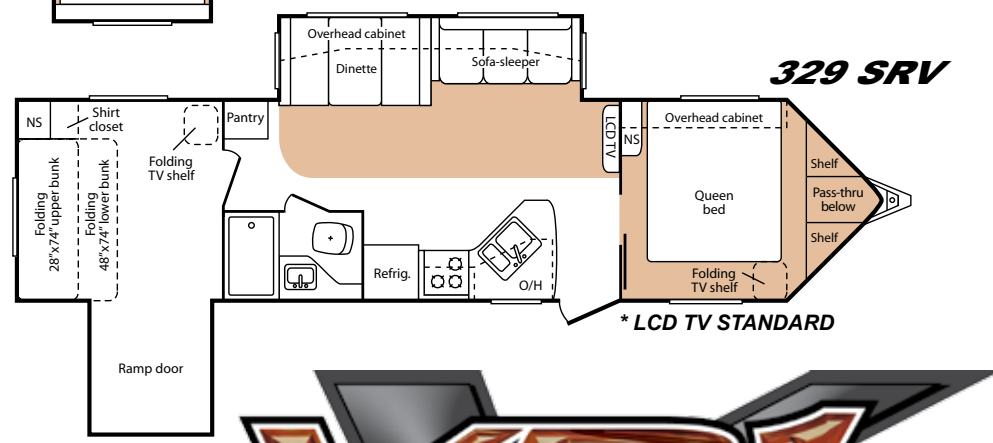
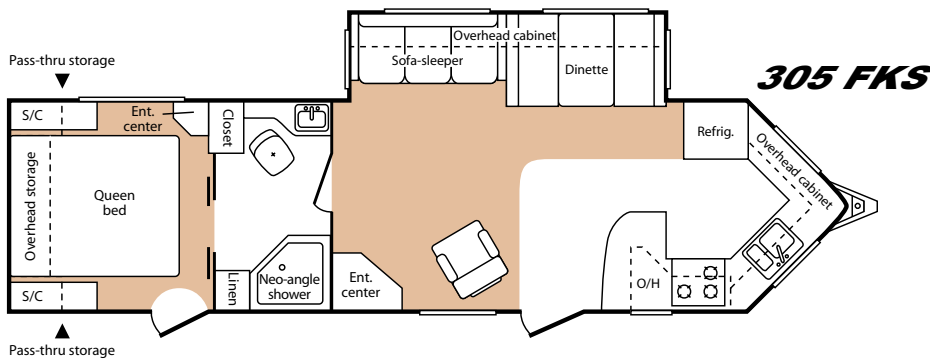
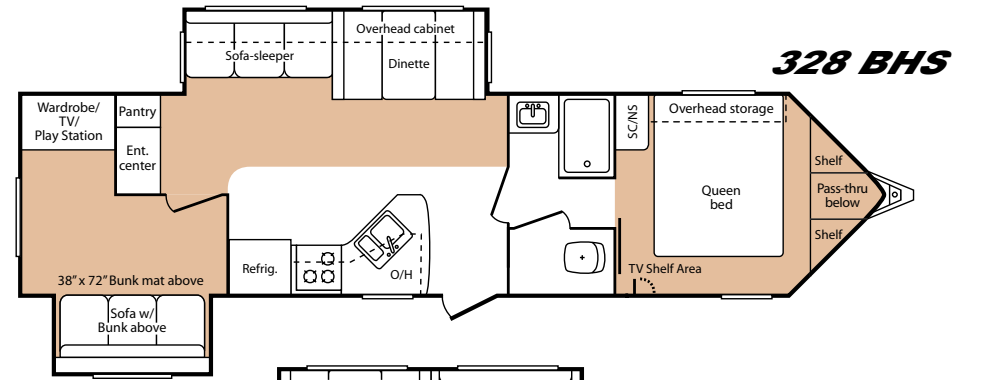
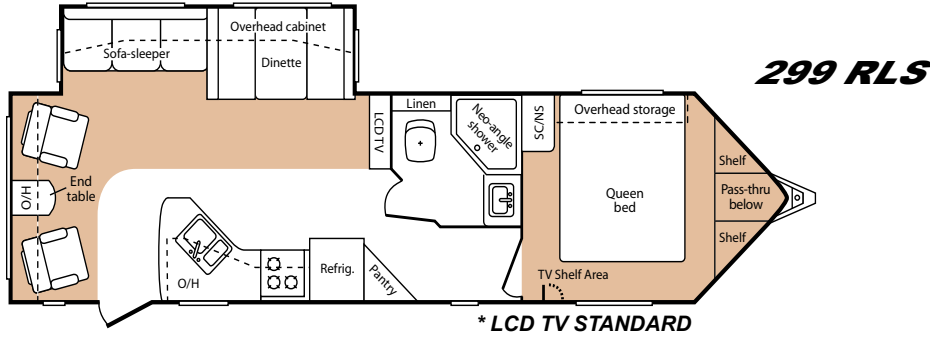
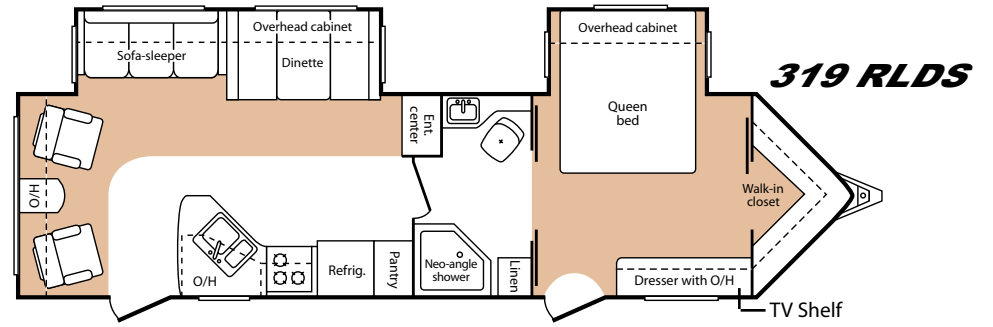
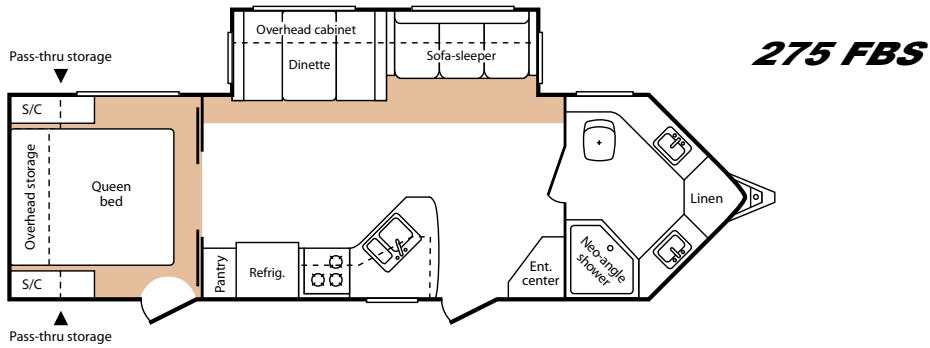
VR1



***Towing Your Dream
Has Never Been So Easy***



The 299RLS, shown here in Ivy, features an LCD TV, raised panel hardwood cabinet doors and a side-aisle bath.



FLOORPLANS

THAT REFLECT YOUR HOME AWAY FROM HOME

STANDARDS

Exterior:

- Welded, aluminum framed walls
- Laminated, gel coated filon fiberglass sidewalls
- 5" trussed roof rafters
- Fully heated and enclosed underbelly including: water and holding tanks, water lines, and dump valves
- 15" tires
- Seamless one-piece floor decking
- Seamless rubber roof
- Rain gutters with down spouts
- Aerodynamic molded TPO front top cap

Interior:

- 20" TV in living room (LCD standard on 299RLS & 329SRV)
- All wood cabinet stiles, pre-drilled and screwed together
- Entertainment center with TV cabinet
- Flush floor slide room in living room
- Flip-up TV shelf in bedroom
- Deluxe innerspring mattress
- Steel drawer glides with ball bearing rollers

Value Package

- Deep acrylic sinks with metal faucets
- CD/AM/FM stereo with four speakers
- 6 gallon quick recovery gas/electric water heater with direct spark
- TV antenna
- Cable hook-up
- Skydome over shower
- Four crank down stabilizer jacks
- Water heater bypass switch
- Porcelain foot-flush toilet
- Exterior shower
- 15" spare tire kit
- Carbon monoxide detector
- LP leak detector

"V" Executive Package:

- Mor/ryde rubber tongue suspension
- Black trimmed, tinted safety glass windows
- Upgraded jack knife sofa
- Hi output range with auto ignitor and 22" oven
- Microwave oven
- 13,500 BTU air conditioner
- ALKO Kober wide track EZ lube axles
- Wide stance axles
- A & E awning

OPTIONS

- Swivel rocker chairs
- Hide a bed sofa
- Free-standing dinette with four chairs
- 15,000 BTU A/C



DECOR OPTIONS



	275FBS	299RLS	305FKS	310BHS	319RLDS	328BHDS	329SRV
Shipping Weight	6525	6810	6900	6995	7615	7870	TBD
Carrying Capacity	3010	2805	2855	2620	1935	1625	TBD
Hitch	735	815	955	780	750	695	TBD
Exterior Length	30' 1"	33'	33'	33' 11"	33' 11"	33' 11"	TBD
Exterior Width	8'	8'	8'	8'	8'	8'	TBD
Ext. Height	11' 2"	11' 2"	11' 3"	11' 3"	11' 3"	11' 3"	TBD
Fresh Water	41	41	41	41	41	41	TBD
Waste Water	28	28	28	28	28	28	TBD
Grey Water	28	28	56	28	28	28	TBD

Your VR1 Dealer:



2642 Hackberry Dr. • Goshen, IN • 46526 • 574.535.2100 • www.keystone-v.com